

.acoustics

akao.industrial

**HIGH-
PERFORMANCE
SILENCING.**



NEVEON

The Future of Foam

HEAR ONLY WHAT MATTERS

Foams are the ideal solution for anyone looking to deal with loud or annoying noise. This is where our **akao** products come in, which offer exceptional absorption capabilities. They improve acoustics, thereby helping to create a more pleasant atmosphere wherever they're used, be it an office, a production facility, a swimming pool or – most importantly – your home.

akao Industrial Acoustics

TECHNICAL ACOUSTIC INSULATION

We offer customized system solutions for machinery and vehicles as well as ventilation and air-conditioning systems. Make the most of our extensive range of materials and machining technologies. Our decades of expertise make us the ideal partner for your project.

This product catalog shows our standard range. We'd be happy to work with you to create custom product solutions based on your own specific requirements.



A DIVERSE RANGE OF PRODUCTS

In the case of machinery and vehicles in particular, it makes sense to use sound-absorbing and insulating materials to reduce the amount of noise that they produce. Our range includes not only ready-to-install parts but also blanks in a variety of combinations, thicknesses and surface finishes, with and without self-adhesive coatings and meeting standards for various fire classes.



Because we cover so many different applications, we have separate data sheets for all our products. We look forward to your inquiry!

Applications in brief

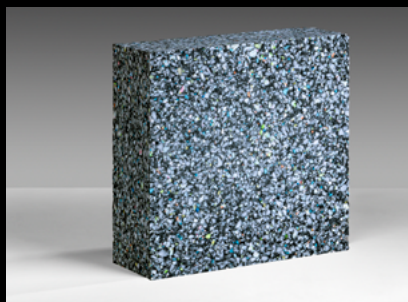
- Agricultural vehicles
- Construction machinery
- Ventilation and air-conditioning systems
- Commercial, municipal and specialist vehicles
- Machinery, equipment, installations

TECHNOLOGIES

- Cutting
- Punching
- Encapsulating
- Bonding
- Coating
- Laminating

MATERIALS

- Polyurethane (PU) foam
- Polyethylene (PE) foam
- Melamine foam
- Recycled PU foam
- Rubber composite
- Films and foils, e.g. self-adhesive films and aluminum foils
- Non-woven fabrics
- Textiles
- And many more



OVERVIEW OF STANDARD PRODUCTS

akao.s.S000	Melamine resin foam, light gray	4
akao.s.S071	Melamine resin foam, light gray	4
akao.s.S080	Melamine resin foam, light gray	5
akao.s.S200	PU foam, open-cell	5
akao.s.S220	PU foam, open-cell	6
akao.s.S230	PU foam, light gray	6
akao.s.S250	PU foam, open-cell	7
akao.s.S255	PU foam, open-cell	7
akao.s.S260	PU foam, open-cell	8
akao.s.S271	PU foam	8
akao.s.S280	PU foam, open-cell	9
akao.s.S360	PU foam, open-cell with PGR750 composite	9
akao.s.S369	PU foam, open-cell, heavy-duty composite matting, recycled foam	10
akao.s.S380	PU foam, open-cell with PGR750 composite	10
akao.s.S389	PU foam, open-cell, heavy-duty composite matting, recycled foam	11
akao.s.S400	PU/rubber heavy-duty composite matting	11
akao.s.S409	EPDM	12
akao.s.S430	Glass-fiber fabric, perforated	12
akao.s.S443	Recycled PU foam	13
akao.s.S471	Recycled PU foam	13
akao.s.S480	Recycled PU foam	14
akao.s.S490	Recycled PU foam	14
akao.s.S580	PU foam, open-cell	15
akao.s.S752	PU foam	15
akao.s.S801	PU foam, open-cell	16
akao.s.S805	Smooth artificial leather, sand	16
akao.s.S809	Smooth artificial leather, gray	16
akao.s.S810	Perforated artificial leather, gazelle	17
akao.s.S293	Polyester fabric, gray	17

akao STANDARD PRODUCTS

akao.s.S000



Acoustic matting

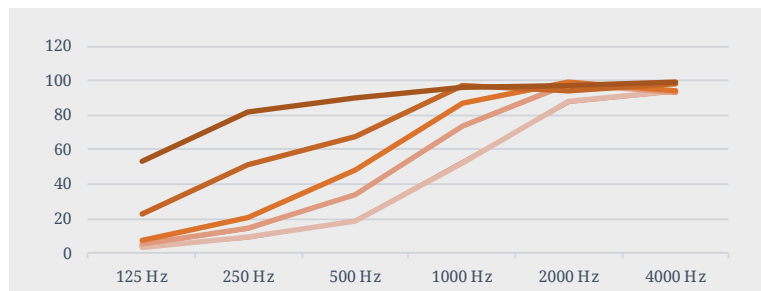
Surface Uncoated, smooth
 Material Melamine resin foam, light gray
 Function Absorption
 Application Rail vehicles, room acoustics

Fire classes

DIN 4102 – B1
 ÖNORM B 3800 – B1, Q1, Tr1
 DIN 5510/2 – S4, SR2, ST2
 FMVSS 302 (DIN 75200) – fulfilled
 EN 1301 C-S2-d0
 EN 45545-2
 BS 476, Parts 6+7 – Class 1
 UL 94 – HF-1, V-0

Dimensions in mm	Absorption coefficient in % (DIN 52215-63; ASTM E 1050-98)					
	125 Hz	250 Hz	500 Hz	1000 Hz	2000 Hz	4000 Hz
1230 x 615 x 30	3.6	9.1	19.0	52.3	87.9	93.8
1230 x 615 x 40	5.0	14.1	34.0	73.5	98.0	93.2
1230 x 615 x 50	7.5	20.7	48.6	86.7	99.0	94.5
1230 x 615 x 80	22.7	51.2	67.0	97.4	94.0	98.6
1230 x 615 x 150	53.2	81.5	89.6	95.8	97.6	99.4

Self-adhesive (SA) coating optional.



akao.s.S071



Acoustic matting

Surface Coarse-grain aluminum
 Material Melamine resin foam, light gray
 Function Absorption and thermal insulation
 Application Rail vehicles

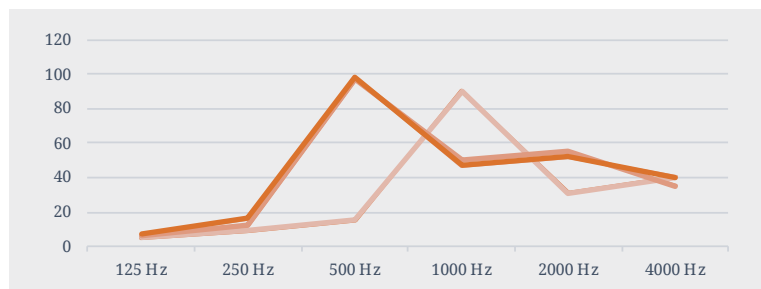
Fire classes

Including DIN 5510/2 – S4, SR2, ST2
 FMVSS 302 (DIN 75200)* – fulfilled

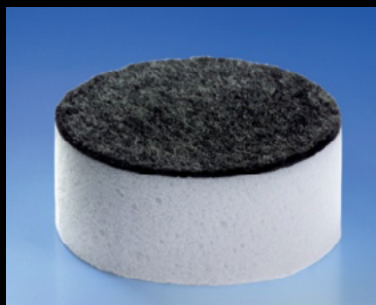
* In-house testing

Dimensions in mm	Absorption coefficient in % (DIN 52215-63; ASTM E 1050-98)					
	125 Hz	250 Hz	500 Hz	1000 Hz	2000 Hz	4000 Hz
1230 x 920 x 20	5.0	9.0	15.0	90.0	31.0	40.0
1230 x 920 x 30	6.0	12.0	97.0	50.0	55.0	35.0
1230 x 920 x 40	7.0	16.0	98.0	47.0	52.0	40.0

Self-adhesive (SA) coating optional.



akao.s.S080



Acoustic matting

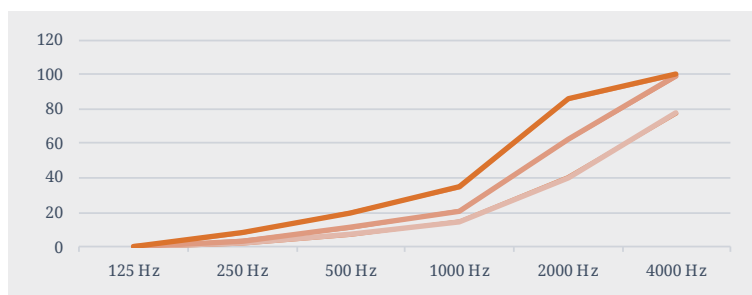
Surface X9 carbon fiber, black
 Material Melamine resin foam, light gray
 Function Absorption
 Application Rail vehicles, nightclubs, movie theaters, etc.

Fire classes ÖNORM B 3800 – B1, Q1, Tr1
 DIN 5510/2 – S4, SR2, ST2
 FMVSS 302* (DIN 75200) – fulfilled
 UL 94 – HF-1, V0

* In-house testing

Dimensions in mm	Absorption coefficient in % (DIN 52215-63; ASTM E 1050-98)					
	125 Hz	250 Hz	500 Hz	1000 Hz	2000 Hz	4000 Hz
1230 x 615 x 20	2.0	6.9	14.5	40.2	77.5	97.0
1230 x 615 x 30	3.7	10.9	20.8	61.9	99.1	94.5
1230 x 615 x 40	7.8	19.8	34.6	85.8	99.7	90.7

Self-adhesive (SA) coating optional.



akao.s.S200



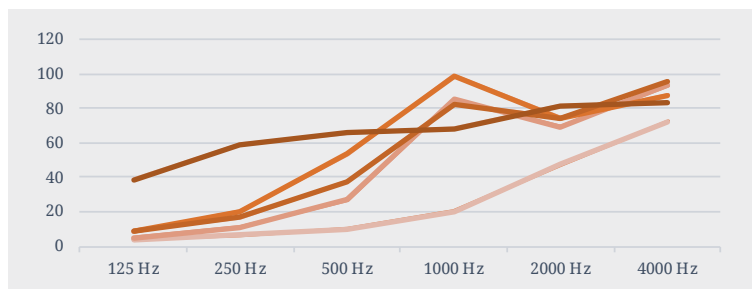
Acoustic matting

Surface Uncoated, smooth
 Material PU foam, open-cell
 Function Absorption
 Application Mechanical and equipment engineering; suitable when the effects of dust, dirt, oil, moisture, etc. are limited

Fire classes FMVSS 302 (DIN 75200)* – fulfilled
 * In-house testing

Dimensions in mm	Absorption coefficient in % (DIN 52215-63; ASTM E 1050-98)					
	125 Hz	250 Hz	500 Hz	1000 Hz	2000 Hz	4000 Hz
1500 x 1000 x 20	4.1	6.5	10.2	20.2	47.4	72.2
1500 x 1000 x 30	5.0	11.0	27.0	85.0	69.0	93.0
1500 x 1000 x 40	8.4	20.1	53.2	98.6	74.5	87.5
1500 x 1000 x 50	9.0	16.9	37.6	82.3	74.3	95.2
1500 x 1000 x 80	38.5	59.1	65.9	68.1	81.5	83.0

Self-adhesive (SA) coating optional.



akao STANDARD PRODUCTS

akao.s.S220



Acoustic matting

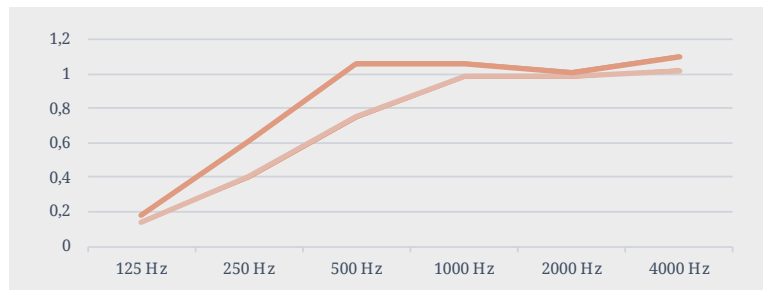
Surface Uncoated, pyramid-shaped
 Material PU foam, open-cell
 Function Absorption
 Application Mechanical and equipment engineering; suitable when the effects of dust, dirt, oil, moisture, etc. are limited

Fire classes FMVSS 302 (DIN 75200)* – fulfilled

* In-house testing

Sold in blocks, delivered unfinished, including trimmings

Dimensions in mm	Absorption coefficient in % (DIN 52212)					
	125 Hz	250 Hz	500 Hz	1000 Hz	2000 Hz	4000 Hz
1000 x 1000 x 70	0.14	0.40	0.75	0.98	0.98	1.02
1000 x 1000 x 100	0.18	0.61	1.06	1.06	1.01	1.10



akao.s.S230



Acoustic matting

Surface Uncoated, egg-crate-shaped
 Material PU foam, light gray
 Function Absorption
 Application Mechanical and equipment engineering; suitable when the effects of dust, dirt, oil, moisture, etc. are limited

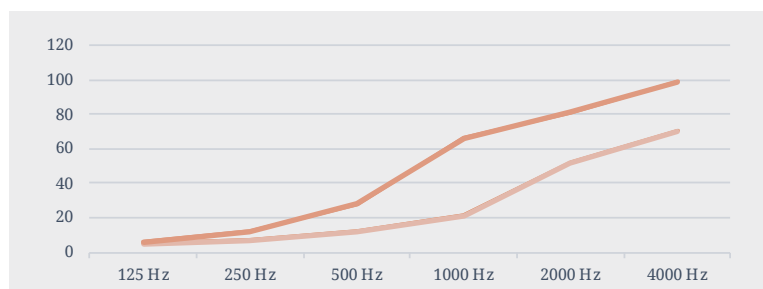
Fire classes FMVSS 302 (DIN 75200)* – fulfilled

* In-house testing

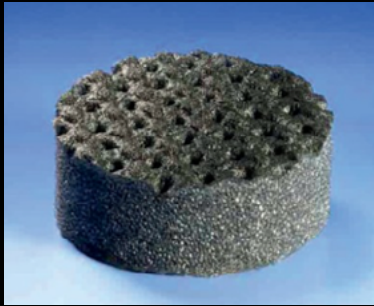
Sold in blocks

Dimensions in mm	Absorption coefficient in % (DIN 52215-63; ASTM E 1050-98)					
	125 Hz	250 Hz	500 Hz	1000 Hz	2000 Hz	4000 Hz
1500 x 1000 x 30	5.0	7.0	12.0	21.0	52.0	70.0
1500 x 1000 x 40	6.0	12.0	28.0	66.0	81.0	99.0

Self-adhesive (SA) coating optional.



akao.s.S250



Acoustic matting

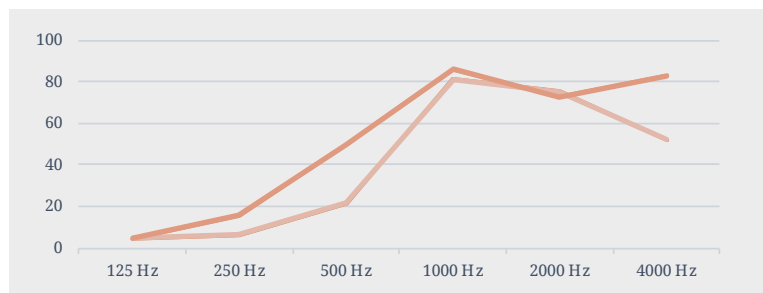
Surface Heat-embossed
 Material PU foam, open-cell
 Function Absorption
 Application Mechanical and equipment engineering

Fire classes FMVSS 302 (DIN 75200)* – fulfilled

* In-house testing

Dimensions in mm	Absorption coefficient in % (DIN 52215-63; ASTM E 1050-98)					
	125 Hz	250 Hz	500 Hz	1000 Hz	2000 Hz	4000 Hz
1500 x 1000 x 20	4.6	6.3	21.4	81.5	75.4	52.0
1500 x 1000 x 30	4.39	15.65	49.83	85.96	72.78	83.17

Self-adhesive (SA) coating optional.



akao.s.S255



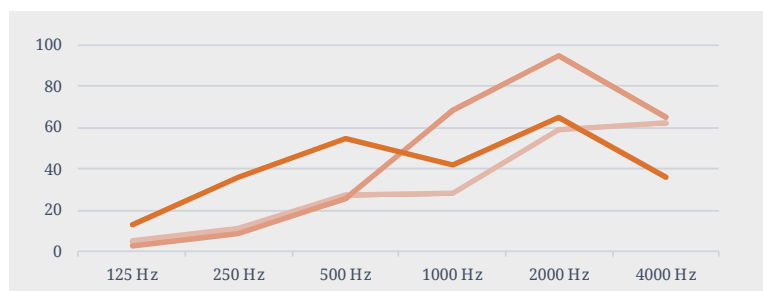
Acoustic matting

Surface Heat embosed smooth surface
 Material PU foam, open-cell
 Function Absorption
 Application Mechanical and equipment engineering

Fire classes FMVSS 302 (DIN 75200)* – fulfilled

* In-house testing

Dimensions in mm	Absorption coefficient in % (DIN 52215-63; ASTM E 1050-98)					
	125 Hz	250 Hz	500 Hz	1000 Hz	2000 Hz	4000 Hz
1500 x 1000 x 10	5.0	11.0	27.0	28.0	59.0	62.0
1500 x 1000 x 20	3.1	9.1	25.3	68.3	94.7	65.1
1500 x 1000 x 30	13.0	36.0	55.0	42.0	65.0	36.0



akao STANDARD PRODUCTS

akao.s.S260



Acoustic matting

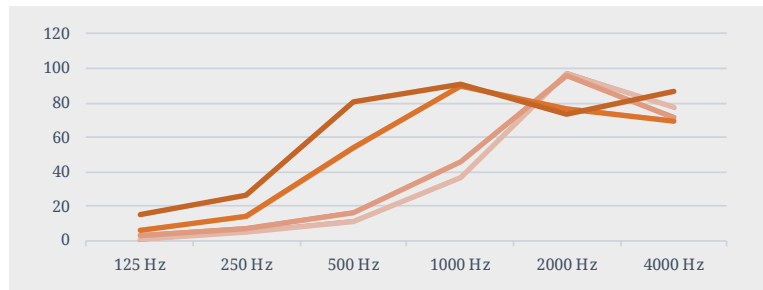
Surface PU film, black
 Material PU foam, open-cell
 Function Absorption
 Application Mechanical and equipment engineering, ventilation/air-conditioning; oil- and water-repellent

Fire classes FMVSS 302 (DIN 75200)* – fulfilled

* In-house testing

Dimensions in mm	Absorption coefficient in % (DIN 52215-63; ASTM E 1050-98)					
	125 Hz	250 Hz	500 Hz	1000 Hz	2000 Hz	4000 Hz
1500 x 1000 x 15	0.9	5.0	11.2	36.4	97.3	77.2
1500 x 1000 x 20	3.0	7.1	16.6	45.8	95.8	71.4
1500 x 1000 x 30	6.3	13.8	53.9	89.7	76.5	69.3
1500 x 1000 x 50	14.8	26.0	80.7	91.0	73.0	86.5

Self-adhesive (SA) coating optional.



akao.s.S271



Acoustic matting

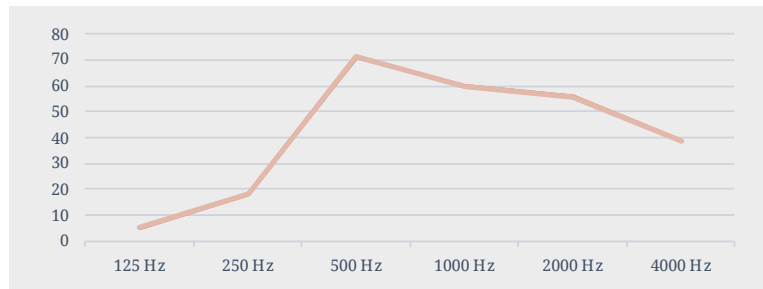
Surface Aluminum foil, embossed
 Material PU foam
 Function Absorption
 Application Mechanical and equipment engineering, ventilation/air-conditioning; oil- and water-repellent

Fire classes FMVSS 302 (DIN 75200)* – fulfilled

* In-house testing

Dimensions in mm	Absorption coefficient in % (DIN 52215-63; ASTM E 1050-98)					
	125 Hz	250 Hz	500 Hz	1000 Hz	2000 Hz	4000 Hz
1500 x 1000 x 30	5.0	18.0	71.0	60.0	56.0	39.0

Self-adhesive (SA) coating optional.



akao.s.S280



Acoustic matting

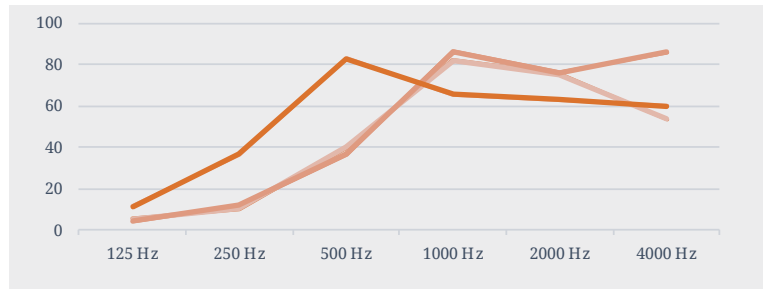
Surface G1 polyester fabric, black
 Material PU foam, open-cell
 Function Absorption
 Application Mechanical, automotive and equipment engineering; oil- and water-repellent surface; mechanically durable

Fire classes FMVSS 302 (DIN 75200)* – fulfilled
 EG 95/28

* In-house testing

Dimensions in mm	Absorption coefficient in % (DIN 52215-63; ASTM E 1050-98)					
	125 Hz	250 Hz	500 Hz	1000 Hz	2000 Hz	4000 Hz
1500 x 1000 x 20	5.4	10.1	39.8	82.1	75.4	53.5
1500 x 1000 x 30	4.0	11.9	36.7	86.4	76.2	85.8
1500 x 1000 x 40	11.6	36.7	82.9	65.6	63.1	59.9

Self-adhesive (SA) coating optional.



akao.s.S360



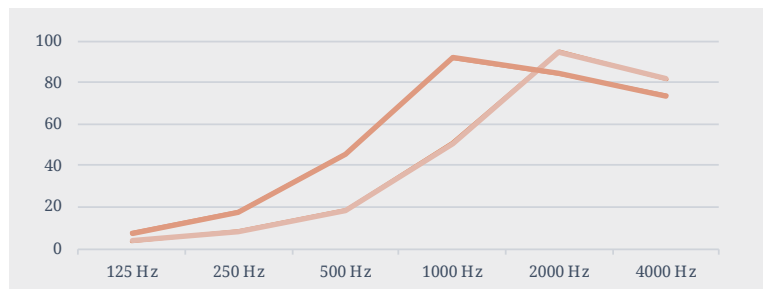
Multi-layer matting

Surface PU film, black
 Material PU foam open celled, plus rebounded foam 750kg
 Function Absorption, insulation and anti-drumming
 Application Mechanical, automotive and equipment engineering, ventilation/air-conditioning; oil- and water-repellent

Fire classes FMVSS 302 (DIN 75200)* – fulfilled

* In-house testing

Dimensions in mm	Absorption coefficient in % (DIN 52215-63; ASTM E 1050-98)					
	125 Hz	250 Hz	500 Hz	1000 Hz	2000 Hz	4000 Hz
1500 x 1000 x 23	3.5	8.1	18.6	50.7	95.1	81.9
1500 x 1000 x 33	7.4	17.6	45.6	92.0	84.3	73.7



akao STANDARD PRODUCTS

akao.s.S369



Multi-layer matting

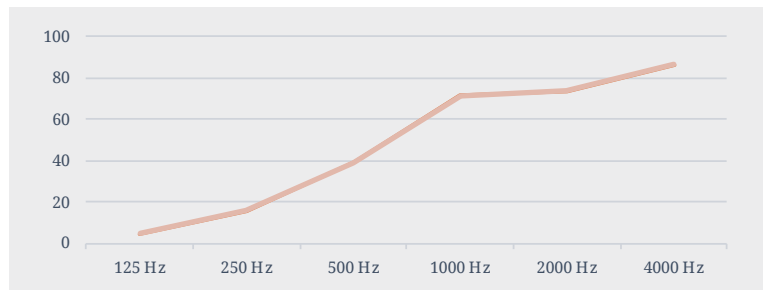
Surface PU film, black
 Material PU foam, open-cell, heavy-duty composite matting, recycled PU foam
 Function Absorption and insulation for specialist requirements
 Application Mechanical and equipment engineering; oil- and water-repellent

Fire classes FMVSS 302 (DIN 75200)* – fulfilled

* In-house testing

Dimensions in mm	Absorption coefficient in % (DIN 52215-63; ASTM E 1050-98)					
	125 Hz	250 Hz	500 Hz	1000 Hz	2000 Hz	4000 Hz
1500 x 1000 x 31	4.6	16.0	39.4	71.7	73.8	86.4

Self-adhesive (SA) coating optional.



akao.s.S380



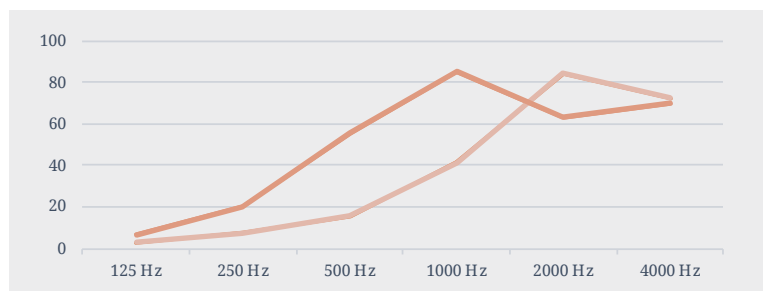
Multi-layer matting

Surface G1 polyester fabric, black
 Material PU foam, PGR750 recycled PU foam
 Function Absorption, insulation and anti-drumming
 Application Mechanical, automotive and equipment engineering; oil- and water-repellent surface; mechanically durable

Fire classes FMVSS 302 (DIN 75200)* – fulfilled

* In-house testing

Dimensions in mm	Weight in g/m ²	Absorption coefficient in % (DIN 52215-63; ASTM E 1050-98)					
		125 Hz	250 Hz	500 Hz	1000 Hz	2000 Hz	4000 Hz
1500 x 1000 x 23	2350	2.9	7.3	15.5	41.4	84.3	72.6
1500 x 1000 x 33	2370	6.7	20.4	55.3	85.4	63.1	70.1



akao.s.S389



Multi-layer matting

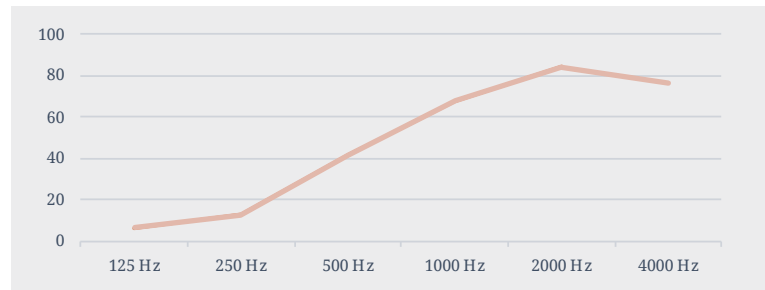
Surface	G1 polyester fabric, black
Material	PU foam, open-cell, heavy-duty composite matting, recycled foam
Function	Absorption and insulation for specialist requirements
Application	Mechanical and equipment engineering; oil- and water-repellent; mechanically durable

Fire classes FMVSS 302 (DIN 75200)* – fulfilled

* In-house testing

Dimensions in mm	Weight in g/m ²	Absorption coefficient in % (DIN 52215-63; ASTM E 1050-98)					
		125 Hz	250 Hz	500 Hz	1000 Hz	2000 Hz	4000 Hz
1500 x 1000 x 31	7000	6.4	12.7	41.8	67.6	84.2	76.4

Self-adhesive (SA) coating optional.



akao.s.S400



Heavy-duty matting

Surface	Uncoated, smooth
Material	PU/rubber heavy-duty composite matting
Function	Insulation and anti-drumming
Application	Mechanical, automotive and equipment engineering; vibration damping

Fire classes FMVSS 302 (DIN 75200)* – fulfilled

* In-house testing

Dimensions in mm	Weight in g/m ²
1500 x 1050 x 3	3500
1500 x 1050 x 6	7000
1500 x 1050 x 10	11800

Self-adhesive (SA) coating optional.

akao STANDARD PRODUCTS

akao.s.S409



Heavy-duty matting

Surface Uncoated, smooth
 Material EPDM
 Function Insulation and anti-drumming
 Application Mechanical, automotive and equipment engineering; vibration damping

Fire classes FMVSS 302 (DIN 75200)* – fulfilled
 DIN 4102 – b2
 DIN 5510/2
 ASTM E 662

* In-house testing

Dimensions in mm	Weight in g/m ²
1530 x 1030 x 3	6000

akao.s.S400



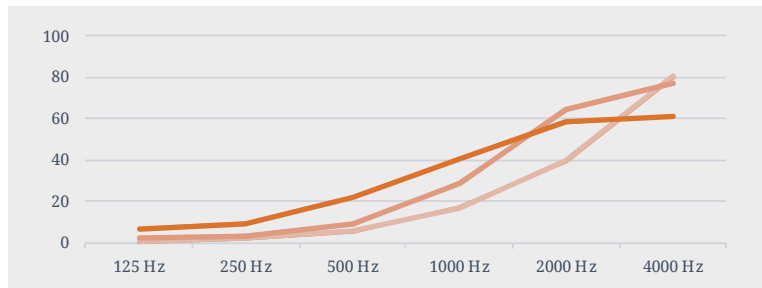
Specialist matting

Surface Aluminum, perforated
 Material Glass-fiber fabric, perforated
 Function Heat shielding and absorption
 Application Automotive and mechanical engineering involving exposure to high temperatures

Fire classes FMVSS 302 (DIN 75200)* – fulfilled

* In-house testing

Dimensions in mm	Absorption coefficient in % (DIN 52215-63; ASTM E 1050-98)					
	125 Hz	250 Hz	500 Hz	1000 Hz	2000 Hz	4000 Hz
1600 x 1000 x 3	0.4	2.3	5.5	17.0	39.7	80.6
1600 x 1000 x 7	2.1	3.3	9.0	29.0	64.4	76.9
1600 x 1000 x 12	6.7	9.3	22.2	40.4	58.2	61.2



akao.s.S443



Acoustic and insulating matting

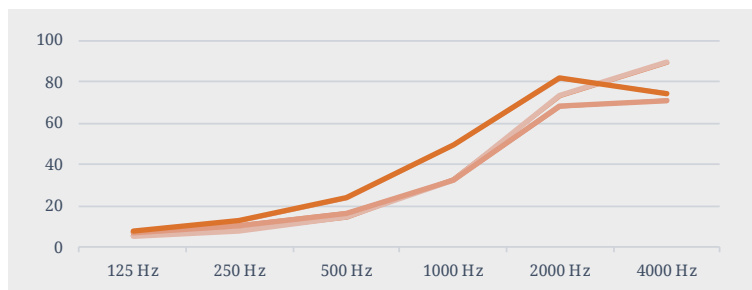
Surface Uncoated, smooth
 Material Rebounded PU foam (80-200kg/m³)
 Function Absorption and insulation
 Application Combined with plasterboard as facing in homes and offices

Fire classes FMVSS 302 (DIN 75200)* – fulfilled

* In-house testing

Dimensions in mm	Weight in g/m ²	Absorption coefficient in % (DIN 52215-63; ASTM E 1050-98)					
		125 Hz	250 Hz	500 Hz	1000 Hz	2000 Hz	4000 Hz
2000 x 1000 x 20	2000	5.6	8.0	14.6	32.8	73.2	89.2
2000 x 1000 x 30	3000	7.3	10.4	16.5	32.2	68.2	70.9
2000 x 1000 x 40	4000	7.7	12.7	23.6	49.1	81.6	74.3

Self-adhesive (SA) coating optional.



akao.s.S471



Acoustic and insulating matting

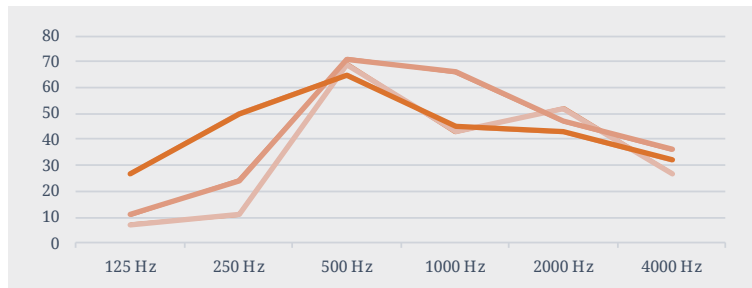
Surface Coarse-grain aluminum
 Material Rebounded PU foam (80-200kg/m³)
 Function Absorption and insulation; thermally insulating
 Application Mechanical, automotive and equipment engineering

Fire classes FMVSS 302 (DIN 75200)* – fulfilled

* In-house testing

Dimensions in mm	Absorption coefficient in % (DIN 52215-63; ASTM E 1050-98)					
	125 Hz	250 Hz	500 Hz	1000 Hz	2000 Hz	4000 Hz
2000 x 1000 x 20	7.0	11.0	69.0	43.0	52.0	27.0
2000 x 1000 x 30	11.0	24.0	71.0	66.0	47.0	36.0
2000 x 1000 x 40	27.0	50.0	65.0	45.0	43.0	32.0

Self-adhesive (SA) coating optional.



akao STANDARD PRODUCTS

akao.s.S480



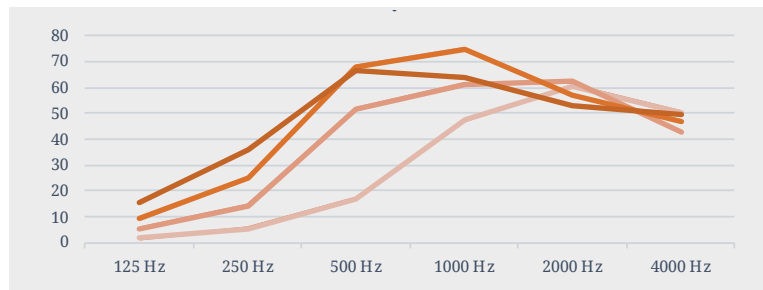
Acoustic and insulating matting

Surface X9 carbon fiber
 Material Rebounded PU foam (80-200kg/m³)
 Function Absorption and insulation
 Application Mechanical, automotive and equipment engineering;
 oil- and water-repellent surface

Fire classes FMVSS 302 (DIN 75200) – fulfilled

Dimensions in mm	Weight in g/m ²	Absorption coefficient in % (DIN 52215-63; ASTM E 1050-98)					
		125 Hz	250 Hz	500 Hz	1000 Hz	2000 Hz	4000 Hz
2000 x 1000 x 10	1000	1.7	5.6	17.2	47.4	60.5	50.5
2000 x 1000 x 20	2000	5.5	14.4	51.9	61.5	62.2	43.0
2000 x 1000 x 30	3000	9.4	24.8	68.3	74.9	56.8	47.1
2000 x 1000 x 40	4000	15.5	36.2	66.5	64.2	53.2	49.9

Self-adhesive (SA) coating optional.



akao.s.S490



Acoustic and insulating matting

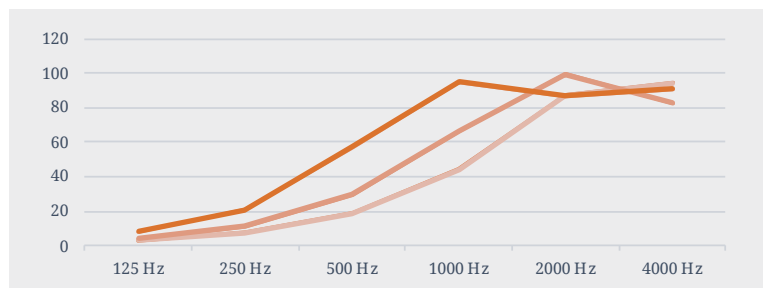
Surface G1 polyester fabric, black
 Material Rebounded PU foam (80-200kg/m³)
 Function Absorption and insulation
 Application Mechanical, automotive and equipment engineering;
 oil- and water-repellent surface

Fire classes FMVSS 302 (DIN 75200)* – fulfilled

* In-house testing

Dimensions in mm	Weight in g/m ²	Absorption coefficient in % (DIN 52215-63; ASTM E 1050-98)					
		125 Hz	250 Hz	500 Hz	1000 Hz	2000 Hz	4000 Hz
2000 x 1000 x 20	2000	3.2	7.8	18.9	44.1	87.1	94.3
2000 x 1000 x 30	3000	4.1	11.4	29.4	66.3	99.7	82.4
2000 x 1000 x 40	4000	8.1	20.9	56.9	94.8	86.7	91.0

Self-adhesive (SA) coating optional.



akao.s.S580



Acoustic matting

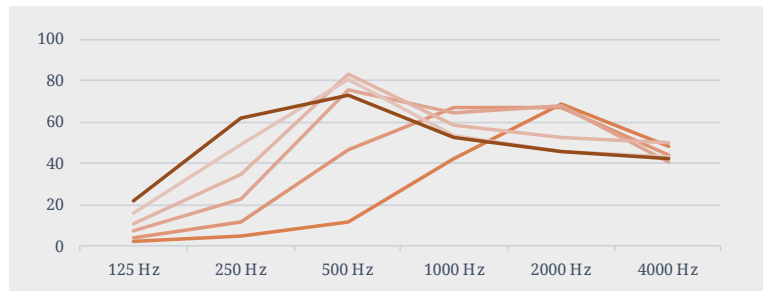
Surface X9 carbon fiber
 Material PU foam, open-cell
 Function Absorption
 Application Automotive and mechanical engineering;
 lining for soundproof booths

Fire classes FMVSS 302 (DIN 75200)* – fulfilled

* In-house testing

Dimensions in mm	Absorption coefficient in % (DIN 52215-63; ASTM E 1050-98)					
	125 Hz	250 Hz	500 Hz	1000 Hz	2000 Hz	4000 Hz
1500 x 1000 x 10	2.2	5.2	11.4	42.6	68.4	48.1
1500 x 1000 x 20	4.2	11.4	46.6	67.4	67.3	44.3
1500 x 1000 x 30	7.4	22.8	75.3	64.8	67.7	40.6
1500 x 1000 x 40	10.6	34.3	83.1	58.2	52.3	49.6
1500 x 1000 x 50	15.7	49.0	80.2	53.2	45.5	43.6
1500 x 1000 x 60	22.3	62.0	73.3	52.9	46.1	42.1

Self-adhesive (SA) coating optional.



akao.s.S752



Thermoformed section

Surface Heat-embossed with carbon fiber / polyester fabric
 Material PU foam
 Function Absorption
 Application Automotive engineering and machinery
 Distinctive feature Embossed edging

Fire classes FMVSS 302 (DIN 75200) – fulfilled

Feel free to get in touch regarding custom products!

akao STANDARD PRODUCTS

akao.s.S801



Interior trim

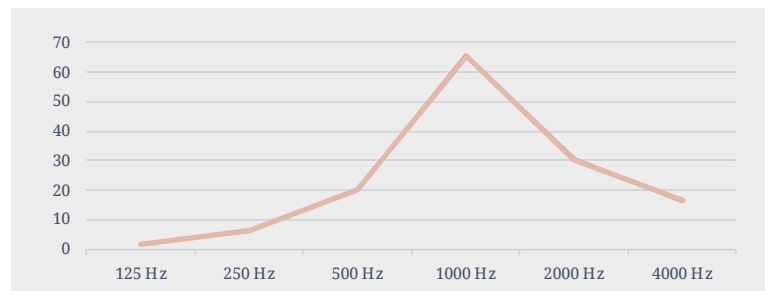
Surface Perforated artificial leather, black
 Material PU foam, open-cell
 Function Absorption and decoration
 Application Automotive engineering; can be wiped clean

Fire classes FMVSS 302 (DIN 75200)* – fulfilled

* In-house testing

Dimensions in mm	Absorption coefficient in % (DIN 52215-63; ASTM E 1050-98)					
	125 Hz	250 Hz	500 Hz	1000 Hz	2000 Hz	4000 Hz
1400 x 1000 x 10	1.9	6.4	20.3	65.4	30.3	16.3

Thicknesses available: 5 mm, 10 mm, 15 mm; others upon request;
 reverse available with adhesive or suede



akao.s.S805

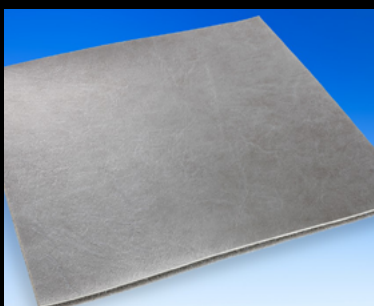


Interior trim

Surface Smooth artificial leather, sand

Thicknesses available: 5 mm, 10 mm, 15 mm; others upon request;
 reverse available with adhesive or suede

akao.s.S809



Interior trim

Surface Smooth artificial leather, gray

Thicknesses available: 5 mm, 10 mm, 15 mm; others upon request;
 reverse available with adhesive or suede

akao.s.S810



Interior trim

Surface Perforated artificial leather, gazelle

Thicknesses available: 5 mm, 10 mm, 15 mm; others upon request;
reverse available with adhesive or suede

akao.s.S293



Interior trim

Surface Polyester fabric, gray

Thicknesses available: 5 mm, 10 mm, 25 mm; others upon request;
reverse available with adhesive or suede

NEVEON

The Future of Foam

WE ARE NEVEON

We are NEVEON and foam solutions are our world! Our polyurethane flexible and composite foams and the products made from these can be found all around us, wherever we are. They make our lives more comfortable, safer and more sustainable.

Thanks to our expertise in manufacturing standard and specialized foams in 300 different quality grades and processing them to create innovative finished and semi-finished products, we offer customized solutions for your everyday comfort and transportation needs as well as for a range of specialty applications, including cozy mattresses, comfy sofas, myriad car parts, ultra-light-weight airplane seats, energy-saving insulation, protective packaging, sports equipment, insoles and lots more. Wherever foam is the solution, we at NEVEON have just the right product to hand.

DIVISION Specialties

The range of products offered by our Specialties division is as colorful as our portfolio of foams. Wherever foams optimize a product or application, our broad range of products makes us your perfect partner of choice. Our products are based on foams (PUR, PE, PP, PS, melamine), vacuum panels, PES nonwovens, rubber and cork. A range of cutting technologies, compression processes and techniques such as forming, punching, profiling, reticulation, skinning and laminating give our foams the function and shape that our customers demand.

Our foams are available with a wide range of flame-retardant, antimicrobial, anti-static, electrically conductive and low-emission finishes.



OUR PORTFOLIO Specialties

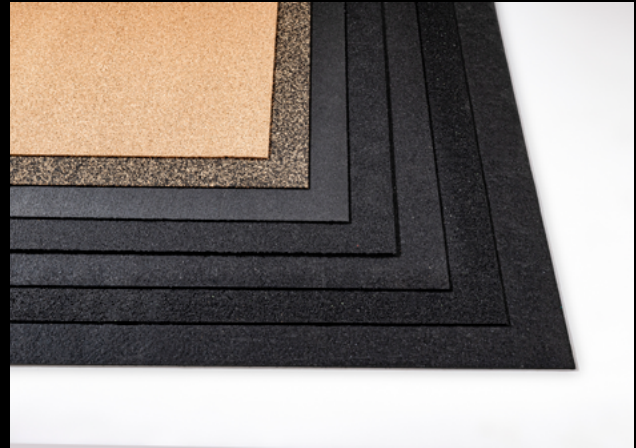
- .acoustics
- .construction
- .consumables
- .filtration
- .insulation
- .sealing
- .sports
- .packaging

OTHER **akao** PRODUCTS

akao.flooring

IMPACT SOUND INSULATION

Our mats made from rubber/cork granules reduce the transmission of impact and structure-borne noise under screed and flooring. The measurements don't lie – they really are exceptionally effective. The impact sound insulation products in the **akao** range are available both as standard versions and as custom products.



akao.room

ROOM ACOUSTICS

Our **akao** acoustic ceiling rafts made from melamine resin foam offer excellent absorption properties and help to create a pleasant indoor atmosphere. **akao** Acoustic absorbers are ideal for retrofitting in existing rooms and so optimizing background noise in the room. Our products are available in modern designs and multiple shapes. We can also print custom designs on acoustic art panels.



akao.door

SEALING SYSTEMS

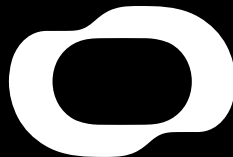
Our **akao** seals provide assemblies and complex systems with lasting protection to stop water, oil and other liquids as well as gases and fine particulate matter from getting through. They also shield against sound, vibrations and heat. Our sealing systems are based on flexible fine-pore foams. As far as potential applications go, the possibilities are endless.





We are NEVEON and foam is our world.

As a strong partner of both trade and industry, we offer foam solutions for a huge range of applications, from the comfort segment through the transportation sector to a limitless variety of specialty applications. However, irrespective of how dissimilar our products and their areas of application are, they constantly have a common goal: They improve the energy balance in many contexts and make life more comfortable and safer. Or, in other words, simply better!



CONTACT

We would be pleased to send you additional product information.
Simply get in touch!
We look forward to hearing from you.

M: office@neveon.com

T: +43 50541 19 001