

.insulation

THE THERMAL INSULATION FOR HIGHEST ENERGY EFFICIENCY.

siro.tank.TI.N-M



NEVEON

The Future of Foam

WE DEVELOP SOLUTIONS FOR TOP QUALITY AND INNOVATIVE INSULATION

Our **siro** portfolio includes a variety of insulation systems for hot water tanks, boilers and heat pumps, as well as jackets, accessories and vacuum insulation panels for water tanks.

INSULATION **siro.tank.TI.N-M**

siro.tank.TI.N-M is an innovative technology to drastically increase the energy efficiency of hot water tanks and heating systems. In addition, the high-quality design ensures an appealing and modern look due to the tongue-and-groove connection.

The simplicity of the assembly is a factor we never lose sight of. The four segments easily fit together, which is why the installation can be done by one person.

Especially **siro.tank.TI.N-VIP/PS-M** is unrivaled on the market. The minimization of heat losses amounts up to 50 percent compared to conventional C-class insulations. Therefore, **siro.tank.TI.N** is a very easy solution to make hot water storage tanks future-proof and energy efficient.



DESCRIPTION

- 1 The thermal insulation **siro.tank.TI.N** is composed of diverse materials. The base insulation consists of expanded polystyrene foam, with admixture of graphite nano particles. The graphite enables an effective heat reflection, which improves the overall product specification. Additionally, vacuum panels are integrated in **siro.tank.TI.N-VIP/PS-M**.
- 2 A nonwoven inner insert ensures optimum adaption to the storage tank and eliminates unwanted thermal losses caused by thermal convection (vertical flow).
- 3 The tongue-and-groove connection enables an uncomplicated and quick connection of the quarter shells.
- 4 The top layer in all types can be manufactured in any color or custom printed. In addition, you can choose between a glossy or grainy surface. Besides the visual improvement, it also protects against mechanical damage.
- 5 Bottom and top insulation and its plastic cover are included.



UNIQUE BENEFITS

- **Highest energy efficiency**
Best solution for energy efficiency classes B and A.
- **Top quality**
No deterioration of the insulation properties, for a lifetime.
- **We take care of our planet**
Environmentally friendly and no harmful ingredients.
- **Solution for the future**
Ensured by continuous innovation.
- **Meet tomorrow's standards today**
Already prepared for tomorrow's increasing energy efficiency requirements.

SUSTAINABLE ARGUMENTS

At NEVEON, sustainability, environmental friendliness and the highest quality go hand in hand.

During the production of our products we focus on quality and sustainability. Our production is managed by quality standards of ISO 9001 (Quality Management) and ISO 14001 (Environment Protection). In the utilization phase our products maintain their properties throughout the whole life cycle, especially concerning thermal conductivity, unlike other insulation materials like polyurethane rigid foam.

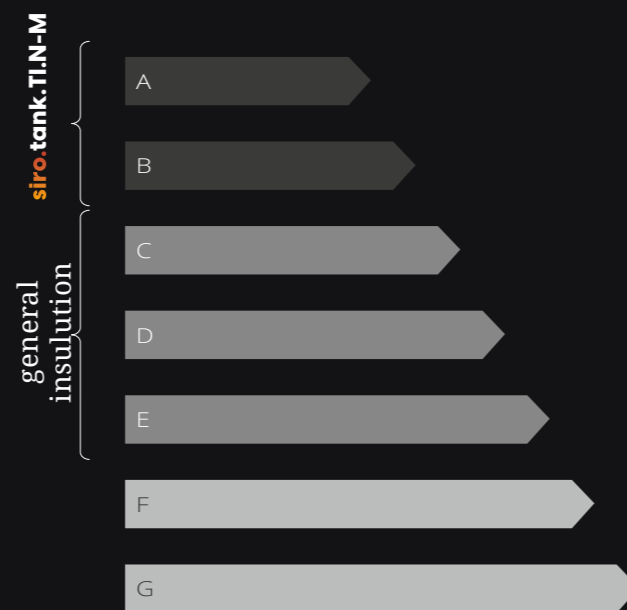
- FCKW, HFCKW and HFKW free
- other halogen gases free
- HBCD free
- unwanted fire inhibitors free
- Isocyanat free
- environment protection REACH conformal
- water stress harmless
- pH no influence
- health influence none
- recyclability 100 %

ENERGY CLASSES

Standard insulations currently comply with energy efficiency class C. With **siro.tank.TI.N/PS-M** and **siro.tank.TI.N/PV-M** you can already achieve class B. This is possible due to the combination of expanded polystyrene (EPS) with graphite particles and polyester fleece.

Our innovative insulation concept from **siro.tank.TI.N-VIP/PS-M** uses high-quality insulating material EPS and innovative vacuum insulation panels. This makes it possible to achieve class A energy efficiency.

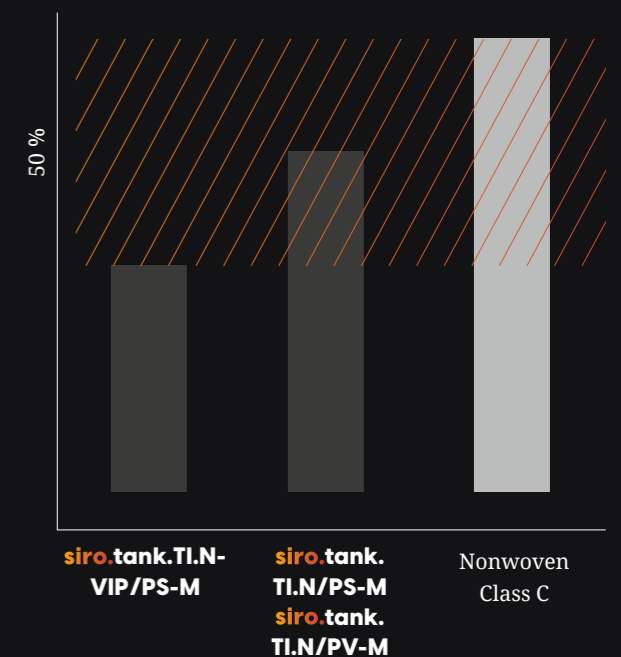
Energy efficiency classes comparison



THERMAL INSULATION PROPERTIES

The thermal conductivity of expanded polystyrene with graphite nano particles is lower than 0.032 W/mK. Ordinary insulation materials like polyester fibre fleece and polyurethane soft foam usually reach approximately 0.040 W/mK. In addition, the use of vacuum insulation panels, which have a thermal conductivity of ≤ 0.004 W/mK, reduces heat losses even more drastically.

Comparison of heat losses



siro.tank.TI.N-VIP/PS-M

The innovative insulating concept of **siro.tank.TI.N-VIP/PS-M** is achieved by using different materials. The basis is EPS, but the special feature is the combination with a vacuum insulation panel. This enables a drastic reduction in heat loss and ensures energy efficiency of class A. A nonwoven inner layer protects the panel and ensures optimum adaption to the storage tank. The outer layer consists of impact-resistant polystyrene while the closure is produced by a tongue-and-groove mechanism, with special sealing strips preventing any possible chimney effects.

- 1 EPS with graphite particles
- 2 Vacuum insulation panel
- 3 Nonwoven
- 4 Sealing strips
- 5 Tongue-and-groove joint
- 6 PS surface

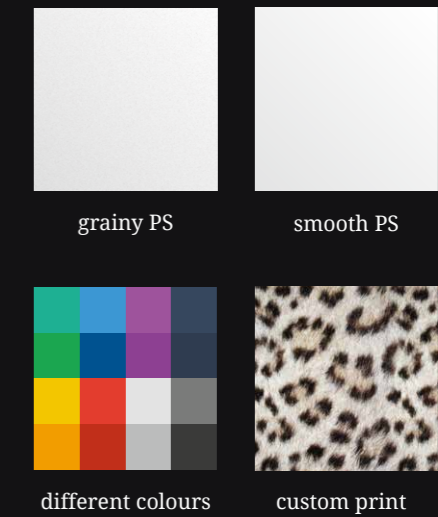


SPECIFICATIONS

IMPORTANT FACTS

surface	solid PS
fastening	tongue and groove
workers for installation	1
special aids or tools	no need
custom adjustments	yes

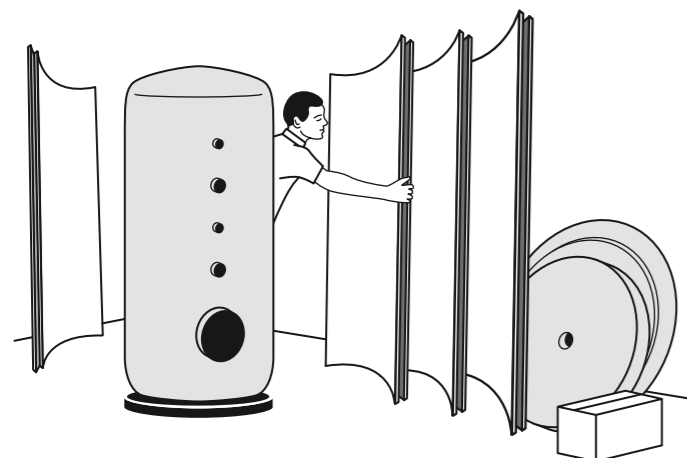
SURFACE FINISHES



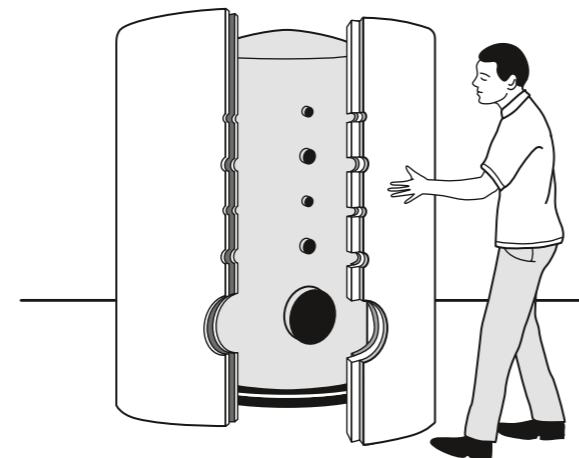
4 EASY STEPS

Following four easy steps, one worker can install the insulation panels on his own in just a few minutes.
NOTE: The customer will receive detailed installation instructions with the delivery.

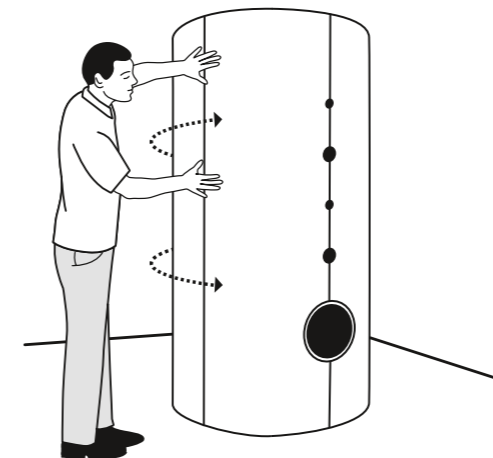
- 1 Have all parts ready, mount base insulation



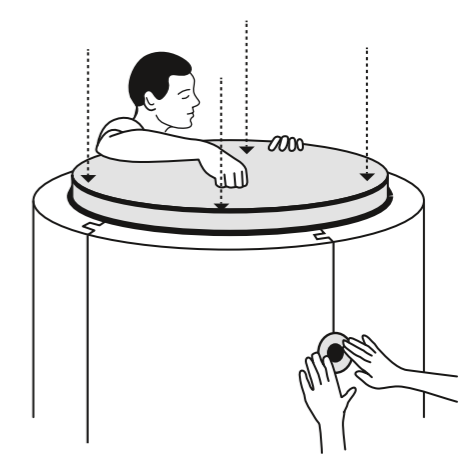
- 2 Arrange main parts of the insulation



- 3 Fasten main connection of the insulation



- 4 Insert lid insulation and mount accessories



siro.tank.TI.N/PS-M

In the **siro.tank.TI.N/PS-M** version the outer layer consists of impact-resistant PS. Energy efficiency class B is provided by expanded polystyrene with graphite particles and a nonwoven inner layer. The individual parts of the insulation are connected by a tongue-and-groove connection. Thanks to this innovative solution, assembly is simplified and the necessary personnel costs can be reduced.

- 1 EPS with graphite particles
- 2 PS surface
- 3 Nonwoven
- 4 Tongue-and-groove joint

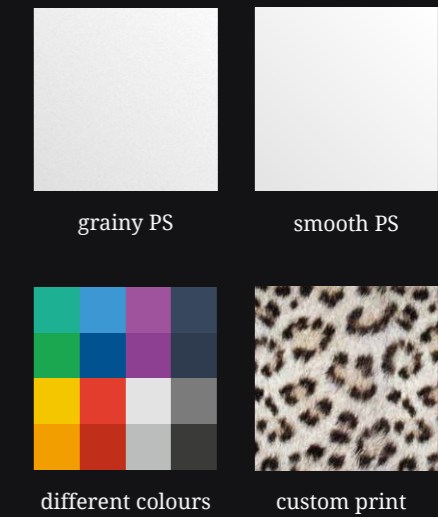


SPECIFICATIONS

IMPORTANT FACTS

surface	solid PS
fastening	tongue and groove
workers for installation	1
special aids or tools	no need
custom adjustments	yes

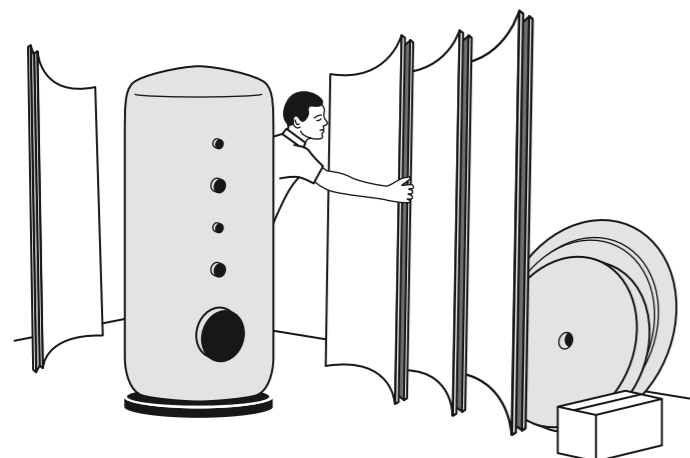
SURFACE FINISHES



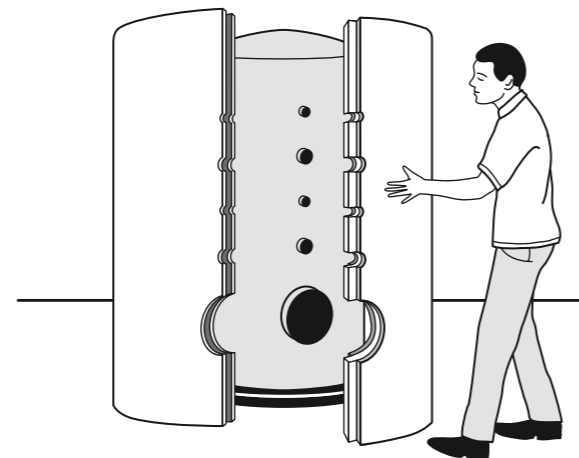
4 EASY STEPS

Following four easy steps, one worker can install the insulation panels on his own in just a few minutes.
NOTE: The customer will receive detailed installation instructions with the delivery.

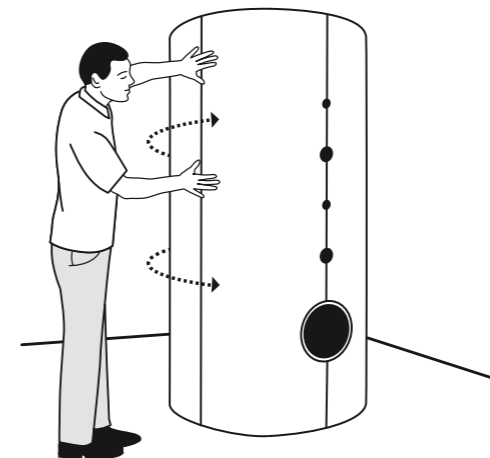
- 1 Have all parts ready, mount base insulation



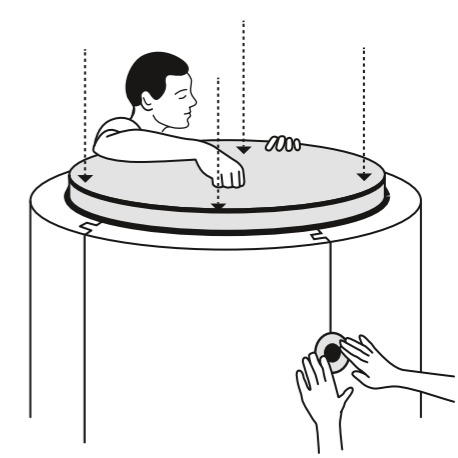
- 2 Arrange main parts of the insulation



- 3 Fasten main connection of the insulation



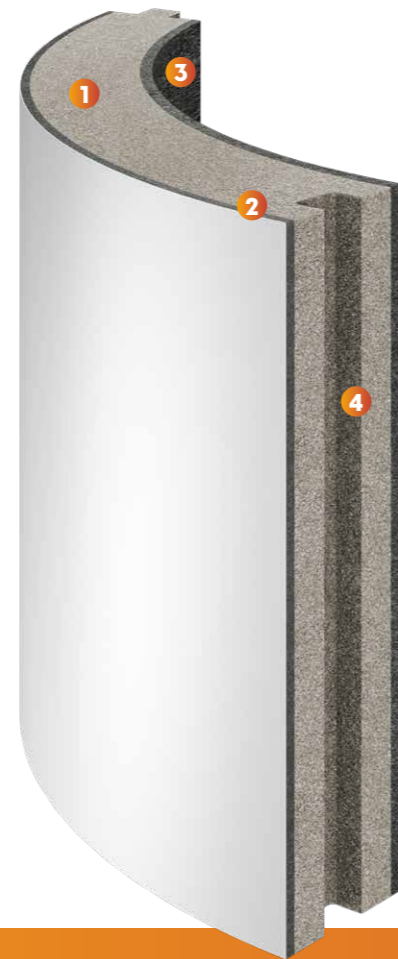
- 4 Insert lid insulation and mount accessories



siro.tank.TI.N/PV-M

The structure of the insulation and the thermal insulation properties are identical with **siro.tank.TI.N/PS-M**. In contrast to the other embodiments, the **siro.tank.TI.N/PV-M** variant has a soft top layer. A tongue-and-groove connection allows easy assembling of the four individual parts.

- 1 EPS with graphite particles
- 2 PVC surface
- 3 Nonwoven
- 4 Tongue-and-groove joint



SPECIFICATIONS

IMPORTANT FACTS

surface	flexible PVC
fastening t	ongue and groove
workers for installation	1
special aids or tools	no need
custom adjustments	yes

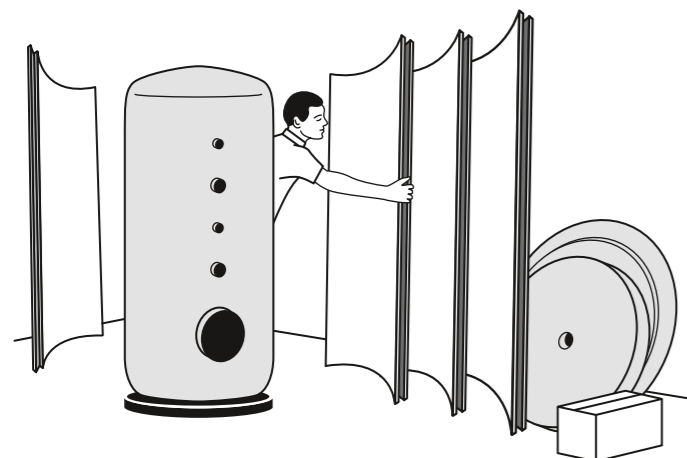
SURFACE FINISHES



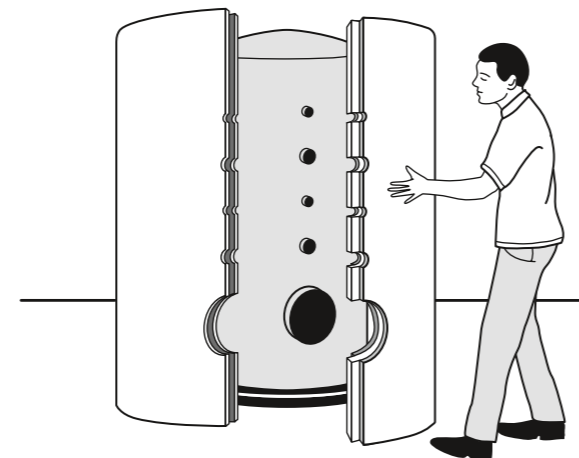
4 EASY STEPS

Following four easy steps, one worker can install the insulation panels on his own in just a few minutes.
NOTE: The customer will receive detailed installation instructions with the delivery.

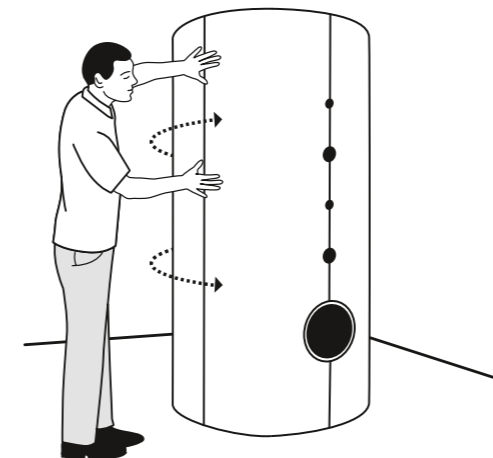
- 1 Have all parts ready, mount base insulation



- 2 Arrange main parts of the insulation



- 3 Fasten main connection of the insulation



- 4 Insert lid insulation and mount accessories





WE ARE NEVEON

We develop products that enhance the lives of people around the world. As a specialist for innovative and sustainable foam solutions we pursue fresh approaches and are passionate about future-oriented ideas.

We offer exceptional flexible and composite foams for the vast diversity of applications provided by our Living & Care, Mobility and Specialties business units.



CONTACT

We will be pleased to provide you with additional product information.

Simply get in touch!

We look forward to hearing from you.

M: office@neveon.com

T: +43 50541 19 001